

BLANCO



Performance First

Instructions for the Use and Care and Installation of

BRF61X BRF61W
BRF62X BRF92X

Range Hood

Dear Customer

You will find that the modern look of your Blanco rangehood blends in perfectly with your kitchen décor. It is easy to use and performs to a high standard.

Blanco also makes a range of products that will enhance your kitchen – such as cooktops, ovens, dishwashers, microwaves, sinks and taps. There are models to complement your new Blanco rangehood. Blanco now has a range of laundry products to choose from.

Of course, we make every effort to ensure that our products meet all your requirements, and our Customer Relations Department is at your disposal, to answer all your questions and to listen to all your suggestions.

Please complete the warranty section of this manual and keep your receipt as proof of purchase. Retain all documents relating to the purchase of Blanco product.

Blanco is committed to providing increasingly efficient products that are easy to use, respect the environment and are attractive and reliable.

BLANCO

GENERAL

Carefully read the following important information regarding installation safety and maintenance. Keep this information booklet accessible for further consultations.

This apparatus was designed to be used in the suction version (air evacuated externally), in the filter version (internal air recycling) or in centralized exhausting version.

SAFETY PRECAUTION

1. Take care when the range hood is operating simultaneously with an open fireplace or burner that depend on the air in the environment and are supplied by other than electrical energy, as the cooker hood removes the air from the environment which a burner or fireplace need for combustion. The negative pressure in the environment must not exceed 4Pa (4x10⁻⁵ bar). Provide adequate ventilation in the environment for a safe operation of the range hood. Follow the local laws applicable for external air evacuation.

General Warnings.

- **The appliance is not intended for use by young children or infirm persons without supervision.**
- **Young children should be supervised to ensure that they do not play with the appliance.**
- **If the supply cord is damaged, it must be replaced by the manufacturer or its service agent or a similarly qualified person in order to avoid a hazard.**
- **There shall be adequate ventilation of the room when the range hood is used at the same time as appliances burning gas or other fuels.**
- **Ensure that the range hood is cleaned frequently.**
- **There is a risk of fire if cleaning is not carried out in accordance with the instructions.**
- **Do not flambe under the range hood.**

Warnings for Installation:

- The exhaust air must not be discharged into a flue which is used for exhausting fumes from appliances burning gas or other fuels.
- The minimum distance from the highest part of the hob of the cooking appliance and the range hood shall not be less than 600mm.
- The regulations concerning the discharge of exhaust air have to be fulfilled.

INSTALLATION INSTRUCTIONS

• Electric Connection

The appliance has been manufactured as a class II, therefore no earth cable is necessary.

The connection to the mains is carried out as follows:

BROWN = L line

BLUE = N neutral

If not provided, connect a plug for the electrical load indicated on the description label. Where a plug is provided, the range hood must be installed in order that the plug is easily accessible.

An omnipolar switch with a minimum aperture of 3mm between contacts, in line with the electrical load and local standards, must be placed between the appliance and the network in the case of direct connection to the electrical network.

- **ATTENTION:** if the lamps will not operate, check that the lamps are screwed in properly.

• MOUNTING THE RANGE HOOD UNDERNEATH A WALL CABINET - (Fig.2)

Fix the range hood to the wall cabinet base with 4 screws suitable for the type of model respecting the indicated measures (Fig.2B). The apparatus is equipped with 2 air exits, one is situated in the upper section and the other is located at the back of the cooker hood either air exit may be used according to installation requirements. If the back air exit is to be used then remove the metal sheet that closes the perforation with small hammerings. A connection ring (C) for the connection of the chimney flue to the air exit is included and a plug/covering for the other air exit which will not be used is also supplied.

• MOUNTING THE RANGE HOOD TO THE WALL - (Fig.3)

Mark out the 4 holes (C & P) as per the dimensions "A" and "B" (Fig. 4) corresponding to the model purchased. Use screws and expanding anchors suited for the type of wall (for example: cement, plaster, etc.). Hang the range hood on the wall using the 2 holes "C" (Fig.3). Finally fix the cooker hood to the wall using the two lower safety holes "P".

• CHANGING THE RANGE HOOD FROM SUCTION VERSION TO FILTER VERSION - (Fig.5)

To change to the filter version (which is still possible even after use in the suction version), you will require two active

carbon filters, not provided, however can be ordered as an accessory. The active carbon filters serve as air purifiers for the air that will be recycled into the environment via the perforations on top front of the range hood. The filters are not washable or regenerative and must be replaced on average every 4 months with regular use. The saturation of the active carbon depends on the length of time of use of the cooker hood, from the type of cooking and the regular cleaning of the anti-grease filter. The active carbon filter "C" must be placed on the suction group situated inside the cooker hood and centred by rotating the filter clockwise for about 90° until it locks into place. Remove the "G" grill in order to carry out this operation. Close the appropriate upper and lower air exit covers. Rotate the knob "L" from the "A" position to the "B" position. The cooker hood is then ready for operation in filter version mode.

REPLACING THE GLOBE.

- Take out the anti-grease filters.
- From the inside press gently down in the center area of the plastic light cover.
- The cover will 'pop' out.
- Change the globe.
- Re-install the cover, position the cover so that the 'clips' will fit into the corresponding holes in the rangehood then simply press the cover in.

Globe 240volts 40Watts Tube E14.

USE AND MAINTENANCE

- It is recommended to operate the appliance prior to cooking.

It is recommended to leave the appliance in operation for 15 minutes after cooking is terminated in order to completely eliminate cooking vapours and odours.

The proper function of the cooker hood is conditioned by the regularity of the maintenance operations, in particular, the active carbon filter.

- The anti-grease filters capture the grease particles suspended in the air, and are therefore subject to clogging according to the frequency of the use of the appliance.

In order to prevent fire hazard, it is recommended to clean the filter by carrying out the following instructions:

- Remove the filters from the range hood approximately every 2 months and wash them in a solution of water and neutral liquid detergent, leaving to soak.
- Rinse thoroughly with warm water and leave to dry.
- The filters may also be washed in the dishwasher.

The aluminium panels may alter in colour after several washes. This is not cause for customer complaint or replacement of panels.

- The active carbon filters purify the air that is replaced in the environment. The filters are not washable or re-useable and must be replaced at maximum every four months. The saturation of the active carbon filter depends on the frequency of use of the appliance, by the type of cooking and the regularity of cleaning the anti-grease filters.

- Clean the fan and other surfaces of the range hood regularly using a cloth moistened with denatured alcohol or non abrasive liquid detergent.

THE MANUFACTURER DECLINES ALL RESPONSIBILITY FOR EVENTUAL DAMAGES CAUSED BY BREACHING THE ABOVE WARNINGS.

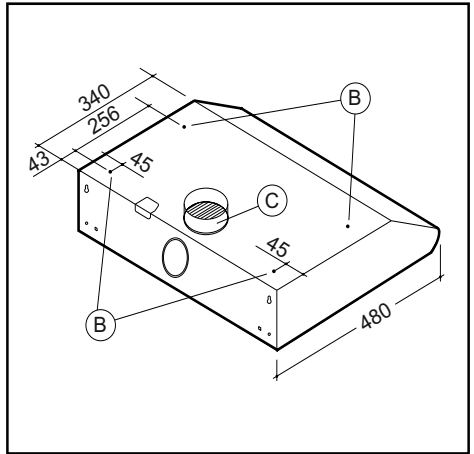


Fig.2

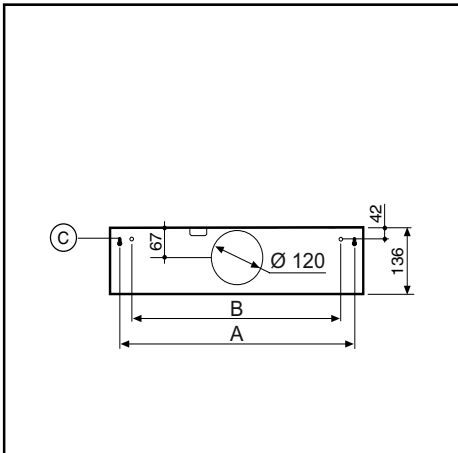


Fig.3

cm.	A	B
50	455	408
60	555	508
70	655	608
80	755	708
90	855	808

Fig.4

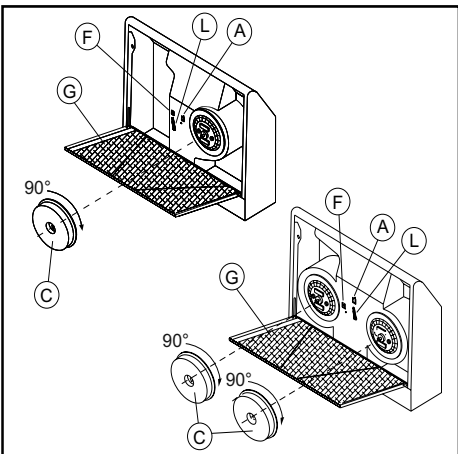


Fig.5

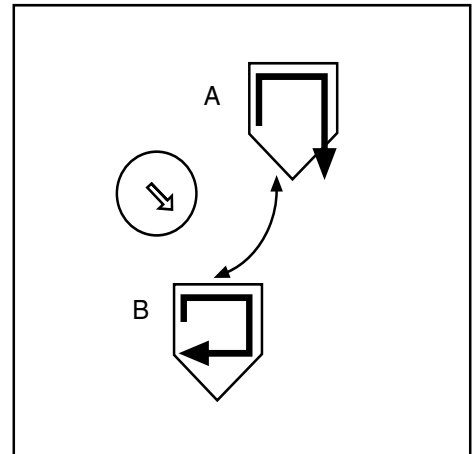


Fig.6

BLANCO CONTACT INFORMATION.

Facsimile: 07 38621114

NEW SOUTH WALESHead Office, Sales & Marketing Office104 Vanessa Street
Kingsgrove NSW 2208Telephone: 02 9503 2888
Facsimile: 02 9503 2810NSW Showroom*40 Ebley Street
Bondi Junction NSW 2022Telephone: 02 9386 1190
Facsimile: 02 9386 1671Agent and Sales Office.

Hi –Performance Marketing.

7 Coleman Street
Mascot NSW 2020Telephone: 02 88354937
Facsimile: 02 90048739Service and Spare PartsAll General Whitegoods Service
Telephone: 02 8788 8666
Facsimile: 02 9756 1091**AUSTRALIAN CAPITAL TERRITORY**Service and Spare PartsDettevs Appliance & Electrical Care
1/88 Sheppard Street
HumeACT 2905
Telephone: 02 6280 1033
Facsimile: 02 6260 1035**VICTORIA**State Office and Showroom*35 Centre Road
Scoresby VIC 3179Telephone: 03 8756 7888
Facsimile: 03 8756 7907Service and Spare PartsAdvantage Appliances
Telephone: 03 9543 2088
Facsimile: 03 9544 2102**QUEENSLAND**State Office and Showroom*Citilink Business Centre
153 Campbell Street
Bowen Hills QLD 4006Telephone: 07 3253 2000
Facsimile: 07 3216 1688Service and Spare PartsTri-Us Appliances
Telephone: 07 3290 4833
Facsimile: 07 3290 2911

Endeavour Appliances

Telephone: 07 3872 7444
Facsimile: 07 3852 2465

Platinum Appliance Service.

Telephone: 07 38621154

SOUTH AUSTRALIA & NORTHERN TERRITORYAgent and Sales OfficeS C Lighting & Electrical Supplies
47 North Terrace
Hackney SA 5069Telephone: 08 8362 4599
Facsimile: 08 8362 4591Service and Spare PartsPrestige Appliance Repair Centre
Telephone: 08 8352 2022
Facsimile: 08 8352 3044**WESTERN AUSTRALIA**Agent and sales OfficeElite Appliance Marketing Pty Ltd
Unit 414 Main Street
Osborne Park WA 6017
Telephone: 08 9201 0311
Facsimile: 08 9201 0366Service and Spare PartsMetropolitan Appliance Repairs
Telephone: 08 9330 1724
Facsimile: 08 9317 1296**TASMANIA**Agent and Sales OfficeMark Pearce Agencies
23 Tranmere Road
Howrah TAS 7018
Tel/Fax: 03 6247 9215Service and Spare PartsElectrical Equipment Service (Launceston)
Telephone: 03 6339 3873
Facsimile: 03 6339 4588

Baldocks Appliance Service (Hobart)

Telephone: 03 6234 5995
Facsimile: 03 6234 8134

* Showroom open six days a week

TOLL FREE NUMBERS

Blanco Sales & Advisory Centre 1800 828 899

Blanco After Sales Customer Service 1800 646 843

Website:

www.meaaappliances.com.

1. Subject to the "Statement of Standard Warranty Conditions" this product is covered by the following Warranty.

TWO (2) YEARS WARRANTY from date of purchase, covering all parts and labour.

2. The appliance is warranted under normal single family domestic installation and use, as set out in the instruction manual, against manufacturing defects for the Warranty periods shown above.

3. Should service be required under this Warranty, the purchaser should contact an approved BLANCO Service Provider during their normal business hours.

4. At no time does BLANCO/MEA have liability for any freight or transportation costs or for any damage during transit or for any consequence of failure of this appliance outside of the normal service area, unless such limitation of liability is prohibited by statute.

5. This Warranty excludes replacement of parts required due to normal wear and tear including light globes.

6. This Warranty only applies, provided the appliance has been used in accordance with the manufacturer's instructions and provided an accident, misuse, neglect or abuse has not damaged the appliance.

7. None of the above Warranties purport to exclude, restrict or modify either the application or the exercise of a right conferred by any applicable Statute.

8. Please complete the details below, which should be retained for future reference along with your proof of purchase:

Date of Purchase:

Model No:

Serial No:

1. The Warranty only applies provided that the appliance has been used in accordance with the manufacturer's instructions and provided that the appliance has not been damaged by an accident, misuse, neglect or abuse of any person other than the manufacturer or BLANCO/Major Electrical Appliances ("MEA") or from faulty installation, mis-adjustment or tampering by unauthorised persons.

2. When a service inspection reveals the alleged fault or faults are caused by incorrect operation, contrary to the instruction manual, and otherwise the appliance is in good order and working condition, the purchaser shall be liable for a service fee charged by BLANCO/MEA or one of its' Service Providers.

3. If the appliance is used in Commercial Applications or for Rental purposes, a separate warranty of Twelve (12) months covering all parts with Three (3) months on the labour will apply.

4. Subject to the provisions of any applicable statute this Warranty applies to the original retail purchaser only and is not transferable.

5. Subject to the provisions of any applicable statute, at no time does BLANCO/MEA have liability for freight, transport or travel costs outside normal service areas.

6. None of the above Warranties purport to exclude, restrict or modify either the application or the exercise of a right conferred by any applicable statute.

7. Subject to any Warranties implied by statute, at no time will BLANCO/MEA or its' Service Providers be liable for any economic loss consequent upon the failure of the appliance.

8. This Warranty is only valid for major appliances imported and distributed by BLANCO/MEA, purchased and used in Australia.

MEA0702

